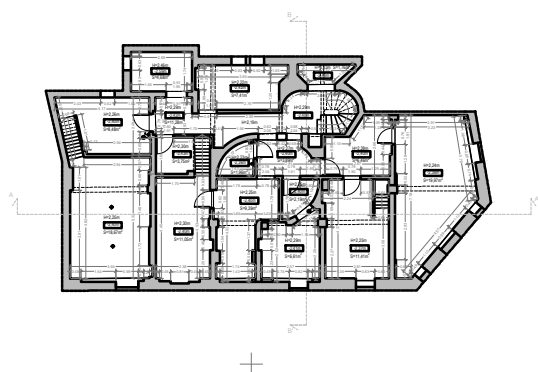
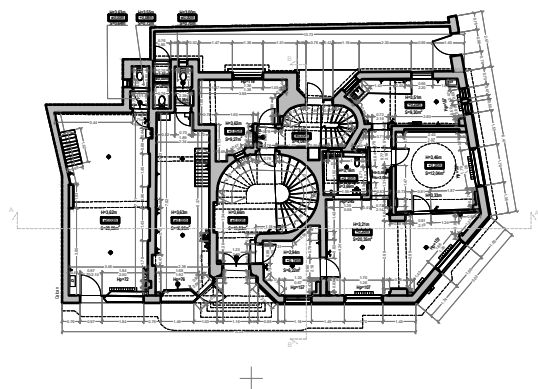


# SUPRAFETE CONSTRUITE PE FIECARE NIVEL

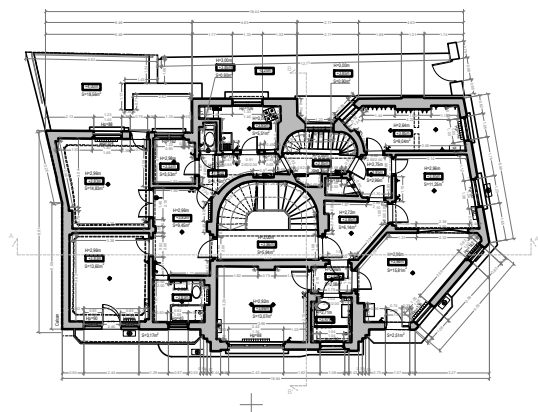
Strada Vasile Lascăr, nr. 123, București, Sector 2



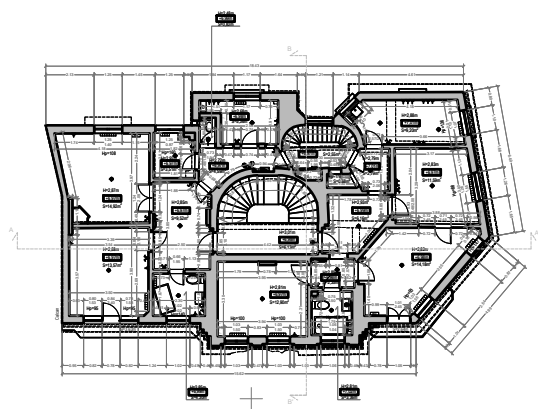
Suprafata construita SUBSOL (Ac) = 171,90mp



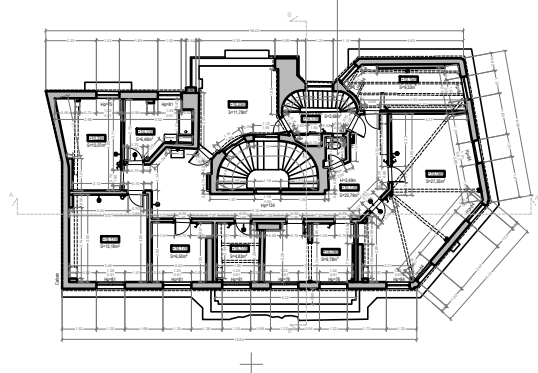
Suprafata construita PARTER (Ac) = 175,72mp



Suprafata construita ETAJ 01 (Ac) = 206,84mp



Suprafata construita ETAJ 02 (Ac) = 185,65mp



Suprafata construita MANSARDA (Ac) = 172,10mp